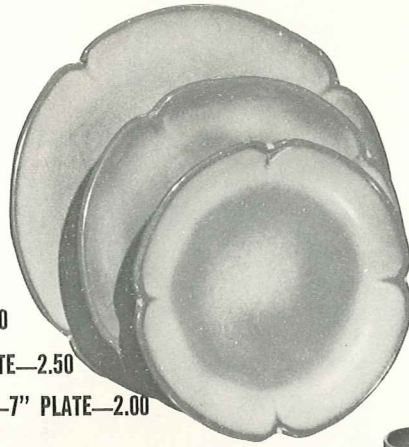


\*5AB—CREAM & SUGAR SET—5.00



\*5V—2 QT. BAKER/BEAN POT—6.00  
\*5V/W—BAKER/W WARMER SET—11.00



5F—10" PLATE—3.50

5FS—9" PLATE—2.50

5G—7" PLATE—2.00



\*5M—16 OZ. MUG—3.00



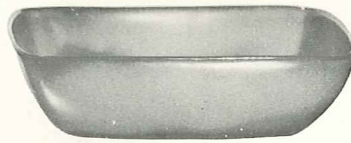
\*5A—12 OZ. CREAMER—2.00



\*5B—SUGAR WITH LID—3.00



\*5W—3 QT. BAKER/BEAN POT—7.50  
\*5W/W—BAKER/W WARMER SET—12.50



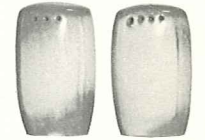
\*5NS—9" VEGETABLE—3.00



\*5CC—5 OZ. TEACUP—2.00



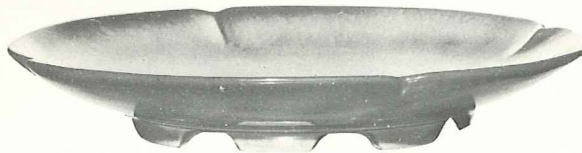
5C—CUP—2.00  
5E—5½" SAUCER—1.50



\*5H—SALT & PEPPER—3.00



\*5N—4½" QT. BOWL—12.50



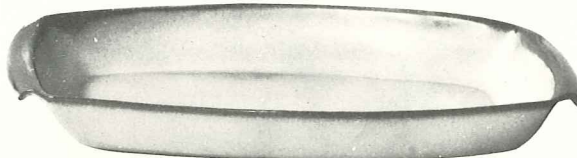
5FC—15" CHOP PLATE—15.00



\*5LC—6 OZ. JUICE—1.50



\*5L—12 OZ. TUMBLER—2.00



5P—17" PLATTER—12.50

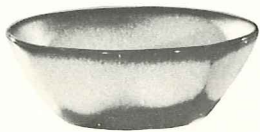
\*5Q—13" PLATTER—6.00



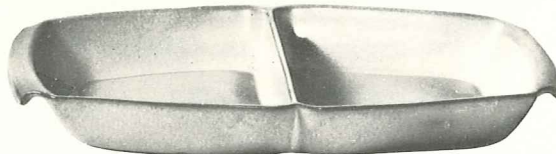
\*5DB—6 OZ. SUGAR—2.00



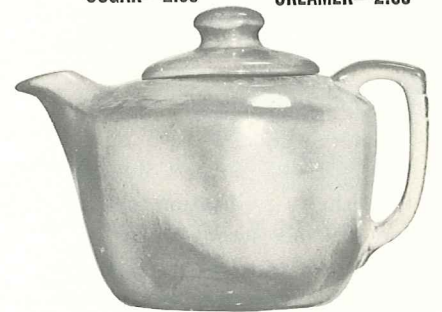
\*5DA—6 OZ. CREAMER—2.00



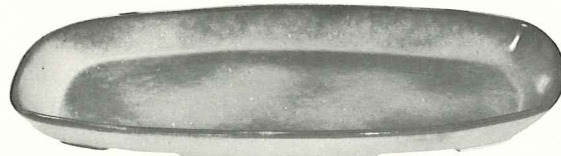
5XL—20 OZ. BOWL—2.50  
5X—14 OZ. CEREAL—2.00  
5XS—9 OZ. FRUIT—1.50



\*5QD—13" DIVIDED BOWL—6.00

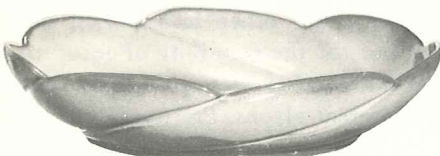


\*5TL—12 CUP TEAPOT—8.00



5QS—13" PLATTER—3.50

\*5PS—9" TRAY—2.50



\*218—12" BOWL—5.00

\*6P—11" PLATTER—3.00



5D—3 QT. PITCHER—7.50



\*6S—TWO SPOUT GRAVY—4.00



\*6T—6 CUP TEAPOT—6.00



\*6J—2 CUP TEAPOT—4.00

THIS PAGE AVAILABLE IN BROWN SATIN, DESERT GOLD, PRAIRIE GREEN & WOODLAND MOSS, EXCEPT WHERE NOTED\*.

\*AVAILABLE IN ALL COLORS—ADD 50% FOR FLAME.

SIZES ARE APPROXIMATE AND MAY VARY SLIGHTLY.